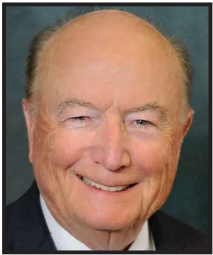


Attention: SAUGUS REPUBLICANS!



GREG CONLON
for U.S. Senator



STEVE NAPOLITANO
for Supervisor #4



ELAN CARR
for Supervisor #5

ELECT GREG CONLON FOR U.S. SENATOR

“ I understand the economic, financial and legal challenges in balancing budgets and effectively serving the public and Veterans and would be honored to have your vote.”

-- Greg Conlon
Businessman/Attorney/CPA/Veteran

ELECT STEVE NAPOLITANO FOR SUPERVISOR #4

“ The future of the Fourth District will be in good hands with Steve Napolitano in 2016 and beyond, and I'm very proud to endorse him.”

-- Don Knabe
Los Angeles County Supervisor, 4th District

ELECT ELAN CARR FOR SUPERVISOR #5

“ More than ever we need a crime fighter on the Board of Supervisors.”

-- Marshall McClain
Director, Los Angeles South Chapter
Peace Officer's Research Association of California



Take This Card To The Polls
Election Day is Tuesday
June 7, 2016
Polls Open 7am - Close 8pm

YOU VOTE AT

VOTE BY MAIL

Call your local Registrar of Voters for last minute changes.

NOTICE TO VOTERS. THIS DOCUMENT WAS PREPARED BY VOTER GUIDE SLATE CARDS, NOT AN OFFICIAL PARTY ORGANIZATION. Appearance in this mailer does not necessarily imply endorsement of others appearing in this mailer, nor does it imply endorsement of, or opposition to, any issues set forth in this mailer. Appearance is paid for and authorized by each candidate and ballot measure which is designated by an *. Voter Guide Slate Cards 6285 E. Spring St., Suite 202, Long Beach, CA 90808

Prsrt Std
U.S. Postage
PAID
AMI



196850013B-141-999



REPUBLICAN VOTER GUIDE



U.S. Senator

GREG CONLON*

As a businessman, attorney/CPA and Veteran he is qualified to create jobs with tax incentives, fix immigration issues, and balance the budget without increasing taxes.

U.S. Representative, 28th District

LENORE SOLIS

State Senator, 25th District

MICHAEL D. ANTONOVICH

State Assembly, 39th District

NO ENDORSEMENT

Judge of the Superior Court, #11

STEVEN SCHREINER*

Rated Well Qualified by Bar Assoc. Supported by Law Enforcement, Taxpayers Associations, Police, Fire & DA Steve Cooley. Most experienced & more convictions than others.

Judge of the Superior Court, #42

E. MATTHEW ACEVES*

Rated Well Qualified by Bar Assoc. Supported by Law Enforcement, Taxpayers Associations, Victims Groups, Police, Fire & DA's Steve Cooley & Jackie Lacey.

Judge of the Superior Court, #60

STEPAN W. BAGHDASSARIAN*

27 Year Attorney & Entrepreneur. Lifelong Republican. Tough. Strong on Public Safety and Family. Now it's Time for Public Service. Experience, Integrity & Judicial Temperament!

Judge of the Superior Court, #84

SUSAN JUNG TOWNSEND*

Supported by Law Enforcement, Taxpayer Associations, Victims Association, Police, Fire and DA's Steve Cooley & Jackie Lacey. Rated Qualified by Bar Association.

Judge of the Superior Court, #120

NO ENDORSEMENT

Judge of the Superior Court, #158

DAVID A. BERGER*

Supported by Law Enforcement, Taxpayers Associations, Victims Associations, Police, Fire & DA's Steve Cooley & Jackie Lacey. Most experienced & successful prosecutor.

Judge of the Superior Court, #165

KATHRYN ANN SOLORZANO*

Rated Well Qualified by Bar Association. Tough Jurist. Runs a no-nonsense Court Room. Supported by Law Enforcement, DA's Jackie Lacey and Steve Cooley.

Supervisor, 5th District

ELAN CARR*

A criminal gang prosecutor and Iraq War Veteran who will put gangs behind bars. Endorsed by police chiefs and more than 66,000 police officers.

California Measure

PROP 50 - YES

Prop 50 gives lawmakers one more way to respond to ethical breaches by making it clear that when the circumstances warrant, lawmakers can be suspended without pay.

Santa Clarita Community College District

Measure E - YES*

Vote Yes on Measure E: Ensure access to classes, labs and career training at College of the Canyons for Santa Clarita Valley students.

Vote

GREG CONLON FOR U.S. SENATOR

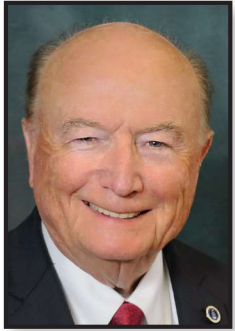
California Republicans are fighting to restore our state's conservative traditions.

Make your voice heard!
TAKE THIS CARD TO THE POLLS

June 7th

VOTE REPUBLICAN - TUESDAY JUNE 7, 2016

TAKE THIS CARD TO THE POLLS



Greg Conlon

for United States Senator

As a businessman, attorney/CPA and Veteran he is qualified to create jobs with tax incentives, fix immigration issues, and balance the budget without increasing taxes.



S. Jung Townsend

for Superior Court Judge #84

Supported by Law Enforcement, Taxpayer Associations, Victims Association, Police, Fire and DA's Steve Cooley & Jackie Lacey. Rated Qualified by Bar Association.



Steven Schreiner

for Superior Court Judge #11

Rated Well Qualified by Bar Assoc. Supported by Law Enforcement, Taxpayers Associations, Police, Fire & DA Steve Cooley. Most experienced & more convictions than others.



David A. Berger

for Superior Court Judge #158

Supported by Law Enforcement, Taxpayers Associations, Victims Associations, Police, Fire & DA's Steve Cooley & Jackie Lacey. Most experienced & successful prosecutor.



E. Matthew Aceves

for Superior Court Judge #42

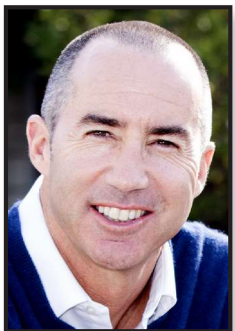
Rated Well Qualified by Bar Assoc. Supported by Law Enforcement, Taxpayers Associations, Victims Groups, Police, Fire & DA's Steve Cooley & Jackie Lacey.



Kathryn Solorzano

for Superior Court Judge #165

Rated Well Qualified by Bar Association. Tough Jurist. Runs a no-nonsense Court Room. Supported by Law Enforcement, DA's Jackie Lacey and Steve Cooley.



Steve Napolitano

for Supervisor #4

An independent, common sense leader endorsed by Supervisor Don Knabe and the California Republican Party. Steve is a problem solver, not a politician!



Elan Carr

for Supervisor #5

A criminal gang prosecutor and Iraq War Veteran who will put gangs behind bars. Endorsed by police chiefs and more than 66,000 police officers.



Vote Yes on Proposition 50

Prop 50 would give the Legislature clear authority to discipline Senators or Assembly Members by suspending them without pay if they breach the public's trust. This commonsense measure was placed on the ballot with strong bipartisan support.

